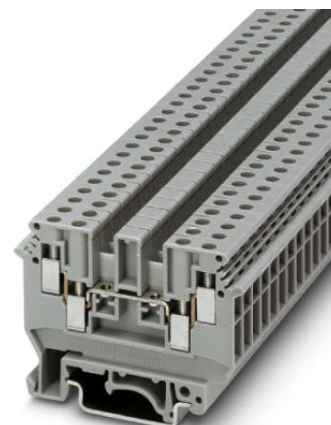


## UDK 4

Order No.: 2775016

<http://eshop.phoenixcontact.de/phoenix/treeViewClick.do?UID=2775016>

1-level terminal block with double connection on both sides, cross section: 0.2 - 2.5 mm<sup>2</sup>, AWG: 30 - 10, width: 6.2 mm, color: Gray

### Commercial data

|                          |                    |
|--------------------------|--------------------|
| EAN                      | 4017918068363      |
| Pack                     | 50 Pcs.            |
| Customs tariff           | 85369010           |
| Weight/Piece             | 0.015678 KG        |
| Catalog page information | Page 289 (CL-2007) |

### Product notes

WEEE/RoHS-compliant since:  
01/01/2003



<http://www.download.phoenixcontact.com>  
Please note that the data given here has been taken from the online catalog. For comprehensive information and data, please refer to the user documentation. The General Terms and Conditions of Use apply to Internet downloads.

### Technical data

#### General

|                                    |      |
|------------------------------------|------|
| Number of levels                   | 2    |
| Number of connections              | 4    |
| Color                              | gray |
| Insulating material                | PA   |
| Inflammability class acc. to UL 94 | V2   |

**Dimensions**

|                  |         |
|------------------|---------|
| Length           | 63.5 mm |
| Width            | 6.2 mm  |
| Height NS 35/7,5 | 47 mm   |
| Height NS 35/15  | 54.5 mm |
| Height NS 32     | 52.5 mm |

**Technical data**

|                                  |   |
|----------------------------------|---|
| Rated surge voltage              | 8 kV  |
| Pollution degree                 | 3   |
| Surge voltage category           | III   |
| Insulating material group        | I   |
| Connection in acc. with standard | IEC 60947-7-1   |
| Nominal current $I_N$            | 32 A (the maximum load current must not be exceeded by the total current of all connected conductors) |
| Nominal voltage $U_N$            | 630 V   |

**Connection data**

|  |                      |
|--|----------------------|
| Conductor cross section solid min.   | 0.2 mm <sup>2</sup>  |
| Conductor cross section solid max.   | 6 mm <sup>2</sup>    |
| Conductor cross section stranded min.                                      | 0.2 mm <sup>2</sup>  |
| Conductor cross section stranded max.                                      | 4 mm <sup>2</sup>    |
| Conductor cross section AWG/kcmil min.                                     | 24                   |
| Conductor cross section AWG/kcmil max                                      | 10                   |
| Conductor cross section stranded, with ferrule without plastic sleeve min. | 0.25 mm <sup>2</sup> |
| Conductor cross section stranded, with ferrule without plastic sleeve max. | 4 mm <sup>2</sup>    |
| Conductor cross section stranded, with ferrule with plastic sleeve min.    | 0.25 mm <sup>2</sup> |
| Conductor cross section stranded, with ferrule with plastic sleeve max.    | 1.5 mm <sup>2</sup>  |
| 2 conductors with same cross section, solid min.                           | 0.2 mm <sup>2</sup>  |
| 2 conductors with same cross section, solid max.                           | 1 mm <sup>2</sup>    |
| 2 conductors with same cross section, stranded min.                        | 0.2 mm <sup>2</sup>  |
| 2 conductors with same cross section, stranded max.                        | 1.5 mm <sup>2</sup>  |

|   |                      |
|---|----------------------|
| 2 conductors with same cross section, stranded, ferrules without plastic sleeve, min.   | 0.25 mm <sup>2</sup> |
| 2 conductors with same cross section, stranded, ferrules without plastic sleeve, max.   | 1.5 mm <sup>2</sup>  |
| 2 conductors with same cross section, stranded, TWIN ferrules with plastic sleeve, min. | 0.5 mm <sup>2</sup>  |
| 2 conductors with same cross section, stranded, TWIN ferrules with plastic sleeve, max. | 1 mm <sup>2</sup>    |
| Cross-section with insertion bridge, solid max.   | 2.5 mm <sup>2</sup>  |
| Cross-section with insertion bridge, stranded max.                                      | 2.5 mm <sup>2</sup>  |
| Type of connection  | Screw connection     |
| Stripping length  | 8 mm                 |
| Internal cylindrical gage   | A3                   |
| Screw thread  | M 3                  |
| Tightening torque, min  | 0.5 Nm               |
| Tightening torque max   | 0.6 Nm               |

### Certificates / Approvals

#### Approval logo



#### CSA

|                       |       |
|-----------------------|-------|
| Nominal voltage $U_N$ | 600 V |
| Nominal current $I_N$ | 25 A  |
| AWG/kcmil             | 22-10 |

#### CUL

|                       |       |
|-----------------------|-------|
| Nominal voltage $U_N$ | 600 V |
| Nominal current $I_N$ | 30 A  |
| AWG/kcmil             | 30-10 |

#### UL

|                       |  |
|-----------------------|--|
| Nominal voltage $U_N$ | 600 V                                    |
| Nominal current $I_N$ | 30 A                                     |
| AWG/kcmil             | 30-10                                    |
| Certification         | BV, CSA, CUL, DNV, GL, GOST, PRS, RS, UL |

| <b>Accessories</b> |                               |   |
|--------------------|-------------------------------|---|
| Item               | Designation                   | Description   |
| <b>Assembly</b>    |                               |   |
| 3022218            | CLIPFIX 35                    | Snap-on end bracket, for 35 mm NS 35/7.5 or NS 35/15 mounting rail, can be fitted with Zack strip ZB 8 and ZB 8/27, terminal strip marker KLM 2 and KLM, width: 9.5 mm, color: gray |
| 2775113            | D-UDK 4                       | Cover, width: 1.5 mm, color: gray   |
| 1201413            | E/UK 1                        | End brackets, for supporting the ends of double-level and three-level terminal blocks, width: 10 mm, color: gray  |
| 0201595            | FB-150 METER                  | Cross connection rail, for fixed bridging of identical inputs and outputs, made of Cu, nickel-plated, 1 m long  |
| 1201028            | NS 32 AL UNPERF 2000MM        | G rail 32 mm (NS 32)  |
| 1201280            | NS 32 CU/120QMM UNPERF 2000MM | G-profile DIN rail, deep-drawn, material: Copper, unperforated, height 15 mm, width 32 mm, length 2 m   |
| 1201358            | NS 32 CU/35QMM UNPERF 2000MM  | G-profile DIN rail, material: Copper, unperforated, height 15 mm, width 32 mm, length 2 m   |
| 1201002            | NS 32 PERF 2000MM             | G-profile DIN rail, material: Steel, perforated, height 15 mm, width 32 mm, length 2 m  |
| 1201015            | NS 32 UNPERF 2000MM           | G-profile DIN rail, material: Steel, unperforated, height 15 mm, width 32 mm, length 2 m  |
| 0801762            | NS 35/ 7,5 CU UNPERF 2000MM   | DIN rail, material: Copper, unperforated, height 7.5 mm, width 35 mm, length: 2 m   |
| 0801733            | NS 35/ 7,5 PERF 2000MM        | DIN rail, material: Steel, perforated, height 7.5 mm, width 35 mm, length: 2 m  |
| 0801681            | NS 35/ 7,5 UNPERF 2000MM      | DIN rail, material: Steel, unperforated, height 7.5 mm, width 35 mm, length: 2 m  |
| 1201756            | NS 35/15 AL UNPERF 2000MM     | DIN rail, deep-drawn, high profile, unperforated, 1.5 mm thick, material: Aluminum, height 15 mm, width 35 mm, length 2 m   |
| 1201895            | NS 35/15 CU UNPERF 2000MM     | DIN rail, material: Copper, unperforated, 1.5 mm thick, height 15 mm, width 35 mm, length: 2 m  |
| 1201730            | NS 35/15 PERF 2000MM          | DIN rail, material: Steel, perforated, height 15 mm, width 35 mm, length: 2 m   |
| 1201714            | NS 35/15 UNPERF 2000MM        | DIN rail, material: Steel, unperforated, height 15 mm, width 35 mm, length: 2 m   |
| 1201798            | NS 35/15-2,3 UNPERF 2000MM    | DIN rail, material: Steel, unperforated, 2.3 mm thick, height 15 mm, width 35 mm, length: 2 m   |
| 2770215            | TS-KK 3                       | Separating plate, for electrical separation of neighboring bridges, can be fitted later, no loss of pitch, color: Gray  |
| <b>Bridges</b>     |                               |   |
| 0201155            | EB 2- 6                       | Insertion bridge, 2-pos., fully insulated   |

|         |             |   |
|---------|-------------|---|
| 0201142 | EB 3- 6     | Insertion bridge, 3-pos., fully insulated   |
| 0201139 | EB 10- 6    | Insertion bridge, 10-pos., divisible, fully insulated                             |
| 0203250 | FBI 10- 6   | Fixed bridge, 10-pos., screw heads with insulating collar, divisible, with screws |
| 0201650 | FBI 100- 6  | Fixed bridge, 100-pos.  |
| 0201867 | FBI 20- 6   | Fixed bridge, 20-pos.   |
| 1302338 | IS-K 4      | Bridge bar isolator, as distance piece  |
| 0301505 | ISSBI 10- 6 | Isolator bridge bar, 10-position, divisible, with screws, for switchable branches |
| 0202280 | LB 10-6 BU  | L-bridge, 10-position, screw with blue insulation material                        |
| 0202358 | LB 10-6 GY  | L-bridge, 10-position, screw with gray insulation material                        |
| 0202293 | LB 10-6 RD  | L-bridge, 10-position, screw with red insulation material                         |
| 0202303 | LB 100-6 BU | L-bridge, 100-position, screw with blue insulation material                       |
| 0202345 | LB 100-6 GY | L-bridge, 100-position, screw with gray insulation material                       |
| 0202316 | LB 100-6 RD | L-bridge, 100-position, screw with red insulation material                        |
| 1413230 | SBRN 2-7    | Switching bridge, 2-pos.  |
| 2303239 | USBR 2-7    | Switching bridge, 2-pos.  |
| 2305538 | USBRJ 2-7   | Switching bridge, for bridged terminal groups, 2-pos.                             |

**Marking**

|         |                  |   |
|---------|------------------|---|
| 1007222 | SBS 6:UNBEDRUCKT | Marker cards for modular terminal blocks, color: white  |
| 1004115 | WS 3- 6          | Warning plate, with 2 plastic screws, across 3 terminal blocks, pitch 6 mm                      |
| 1004209 | WS 4- 6          | Warning plate, with 2 plastic screws, across 4 terminal blocks, pitch 6 mm                      |
| 1004403 | WS 5- 6          | Warning plate, with 2 plastic screws, across 5 terminal blocks, pitch 6 mm                      |
| 1050499 | ZB 6:SO/CMS      | Zack strip, 10-section, divisible, special printing, marking according to customer requirements |

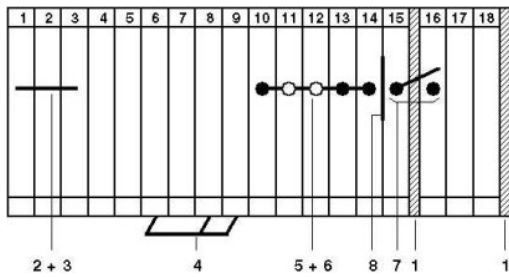
**Plug/Adapter**

|         |             |   |
|---------|-------------|---|
| 0309523 | KSS 3- 6    | Short circuit connector, for short circuiting neighboring terminal blocks, can only be used with PSB or PSBJ, 3-pos., pitch: 6.2 mm, color: Black |
| 0301547 | KSS 6       | Short circuit connector, for short circuiting neighboring terminal blocks, can only be used with PSB or PSBJ, 2-pos., pitch: 6.2 mm, color: Black |
| 0601292 | PSB 3/10/4  | Test plug socket, not insulated, length: 10 mm, screw thread width: 3 mm, socket width: 4 mm  |
| 0201304 | PSBJ 3/13/4 | Test plug socket, insulated, length: 13 mm, screw thread width: 3 mm, socket width: 4 mm, insulation material transparent                         |

|         |     |   |
|---------|-----|---|
| 0201647 | RPS | Reducing plug, for transition from 4 mm diameter test plug socket, insulation: gray |
|---------|-----|---|

## Drawings

### Circuit diagram



- 1 = cover
- 2 = fixed bridge, for cross-connections in the terminal center, screw heads with insulating collar
- 3 = fixed bridge, for cross-connections in the terminal center, with crimped-on rollers
- 4 = insertion bridge
- 5 = isolator bridge bar
- 6 = bridge bar isolator
- 7 = switch bar for 2 terminal blocks
- 8 = separating plate